

## LDB 样品测试说明及结果

### 1. 测试坐标原点（虚拟焦点 $x=0.0052\text{mm}$ , $y=-0.0007\text{mm}$ , $z=-0.1333\text{mm}$ ）

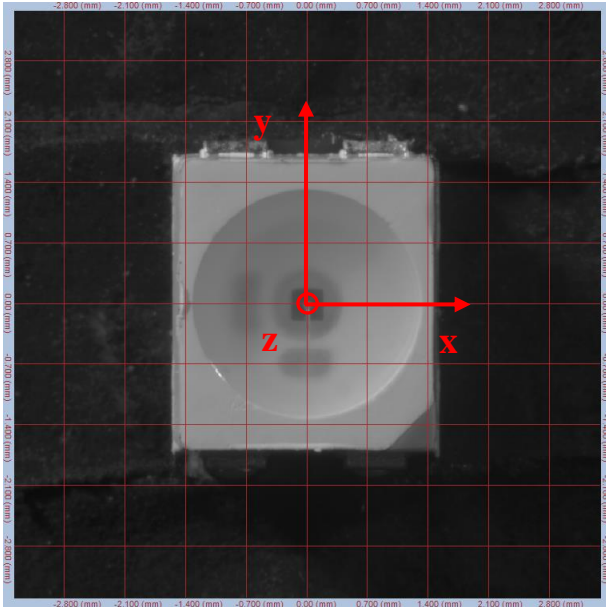


图 1  $I=0^\circ$ ,  $A=0^\circ$

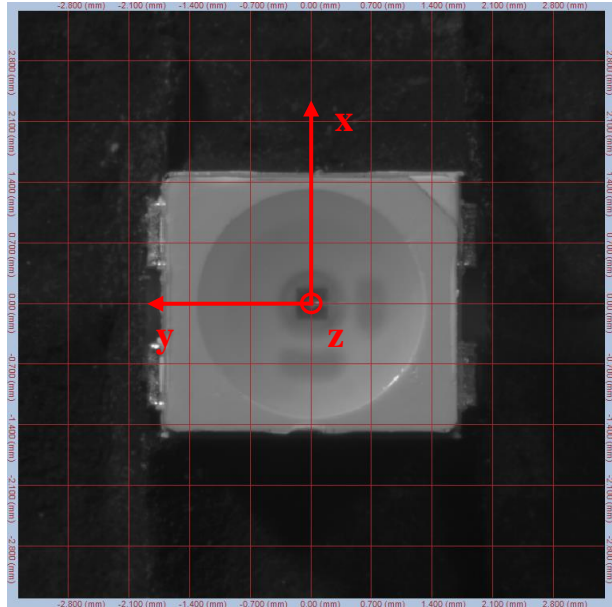


图 2  $I=0^\circ$ ,  $A=90^\circ$

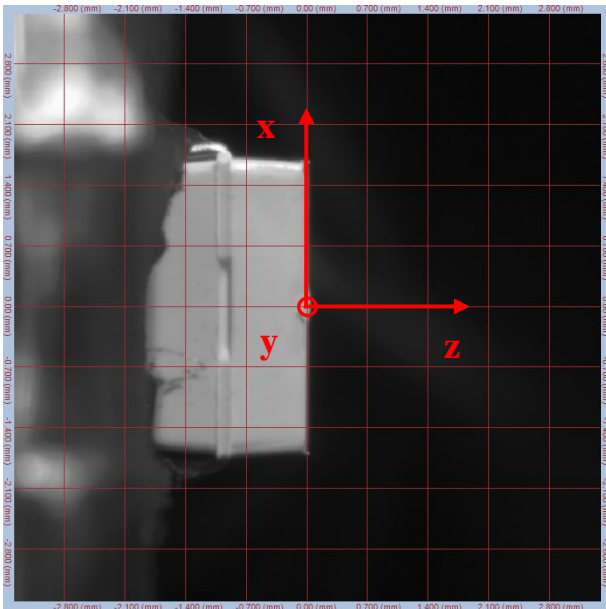


图 3  $I=90^\circ$ ,  $A=90^\circ$

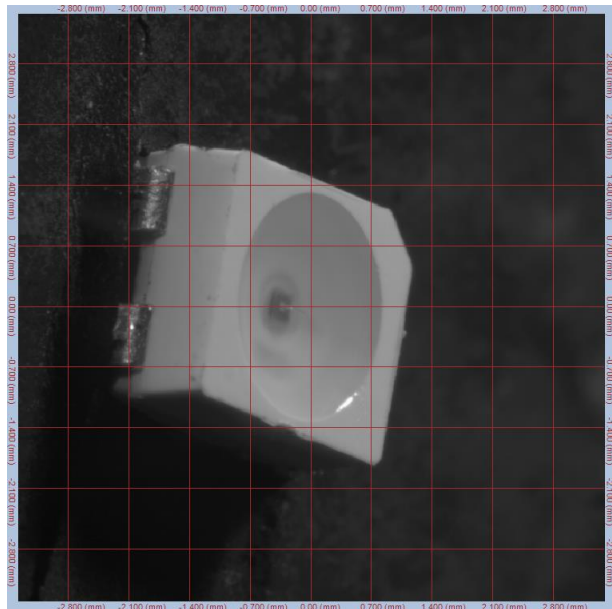


图 4  $I=50^\circ$ ,  $A=75^\circ$